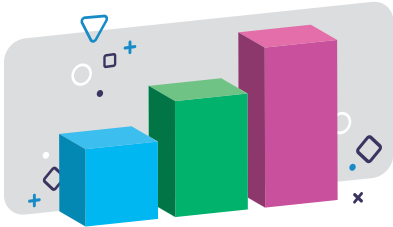


Watch reading grow with the student dashboard



Sora
Where students read



When it comes to measuring literacy, it's important to have accurate insights into your students' reading engagement—insights you can't always get with print. **What if you could access data to help you:**

- See student reading stats in real-time
- Form intervention strategies
- Make book purchasing decisions
- Identify usage trends

The student dashboard empowers you to dive deeper into how your students are reading in Sora!

What data does the student dashboard show?

From the dashboard landing page, you can view summary data for each student, including:

- Number of books opened
- Time read
- Number of reading sessions
- Number of active days
- Average time per session
- Average time per book
- Achievements earned
- COMING SOON: Daily reading goals

How does the student dashboard work?

1

Enable the student dashboard in OverDrive Marketplace.*

2

Create classes of students to view their reading data.*

3

Repeat!
You can create as many classes as you'd like and add students to multiple classes.

Use rostering in

Marketplace? You can enable automatic syncing so that the dashboard reflects schedule changes in real time!

**specific Marketplace permissions required*

How long is data available?

Your school can choose whether to retain reading data for up to two years.

What about Advantage accounts?

Great news! If your school belongs to a shared collection and maintains an individual Advantage account, you can set up and customize your own student dashboard.

How do I get started?



For student dashboard how-tos, check out **Marketplace Help** resources.

For other questions, contact your **Account Manager** or asksora@overdrive.com

OverDrive



Follow us on social! @sorareadingapp

DiscoverSora.com
schools@overdrive.com
(216) 573-6886

2024 ©OverDrive