

How One Consortium Pioneered Resource Equity With Digital Books

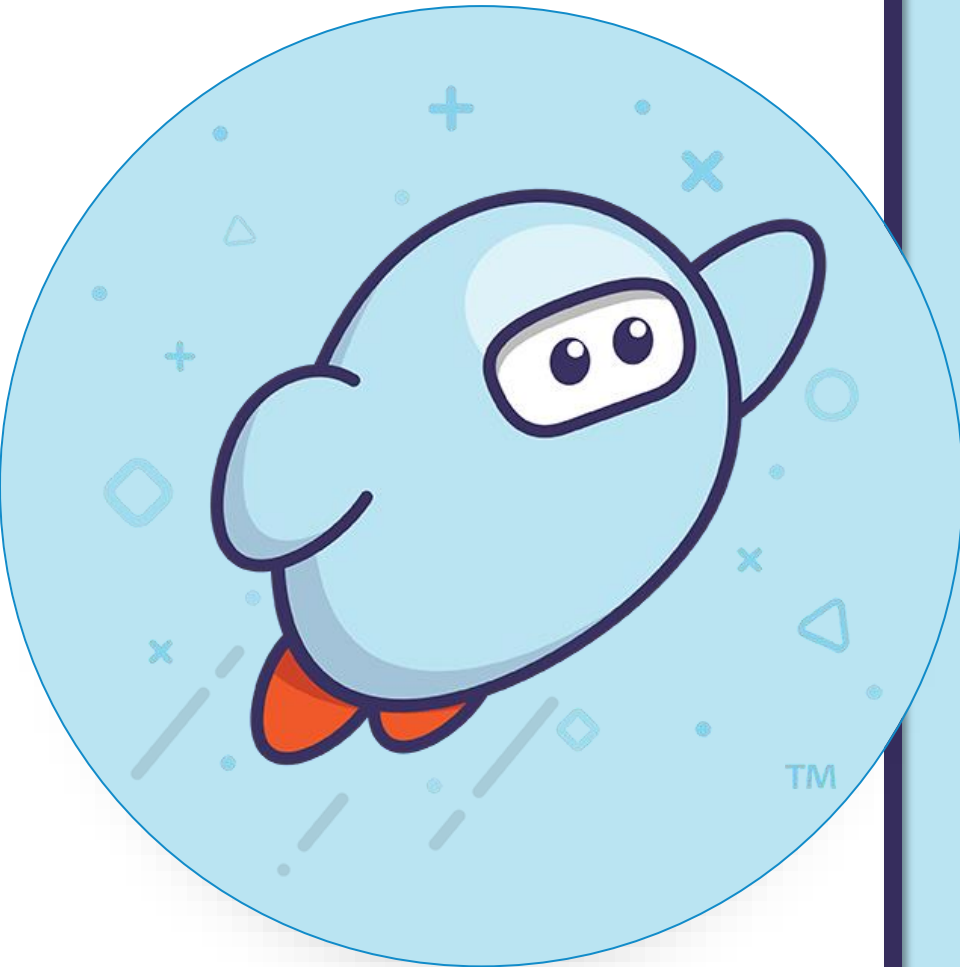


OverDrive
Education®



Sora
The student reading app

OverDrive
Education®



Diahann Ouly

Carbon Lehigh
Intermediate Unit 21
(Pennsylvania)

Curriculum &
Instruction/Educational
Technologies

oulyd@cliu.org

@deeoylea



Helping Children Learn



ISTE Standards:

For Education Leaders:

★ Empowering Leader

Support educators in using technology to advance learning that meets the diverse learning, cultural, and social-emotional needs of individual students.

For Educators:

★ Designer

Use technology to create, adapt and personalize learning experiences that foster independent learning and accommodate learner differences and needs.

For Students:

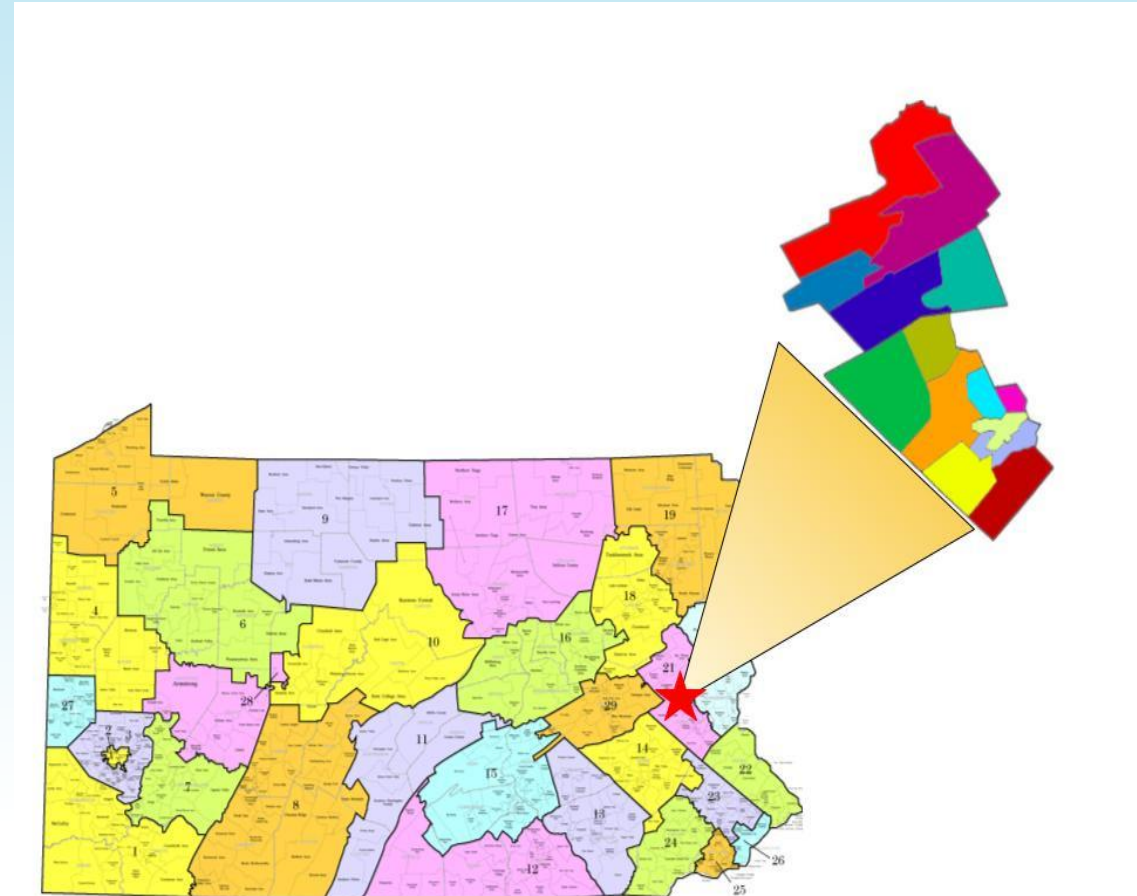
★ Knowledge Constructor

Students curate information from digital resources using a variety of tools and methods to create collections of artifacts that demonstrate meaningful connections or conclusions.



About Carbon Lehigh Intermediate Unit 21

- PA Intermediate Unit = Educational Service Agency
- 14 Public School Districts >65,000 students
- Urban Schools (Allentown = 16,000+students, 85% Free/Reduced Lunch) & Rural Schools (Weatherly = <650 students)
- Library resource access varies by district with some reducing staff to eliminate Library Media Specialists yet one of our more affluent district of ~3,000 students having 800,000+ library checkouts.



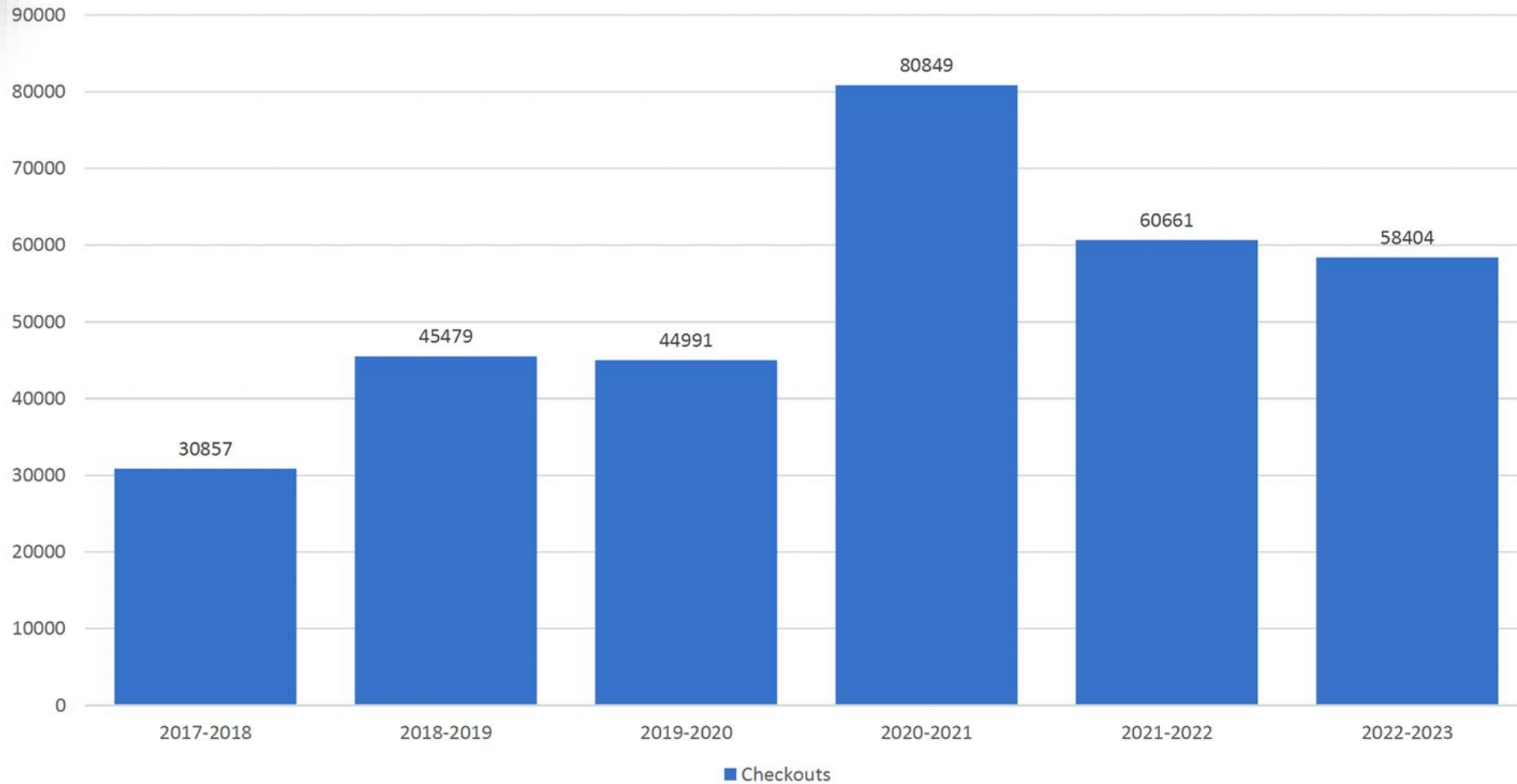


Developing the CLIU 21 Overdrive Consortium

- Consortium begins (2013)
 - 13 LEAs
 - \$20,000 annually
- Collection development
 - All participating entities invited to participate and have a voice
 - CLIU Facilitator serves as single buying entity and consortium manager
 - Quarterly meetings
 - Evolving collection development process
 - Audio books
 - Periodicals
 - Comics
 - Reserve \$\$ for special purchases
 - Reading Olympics
 - Award winners

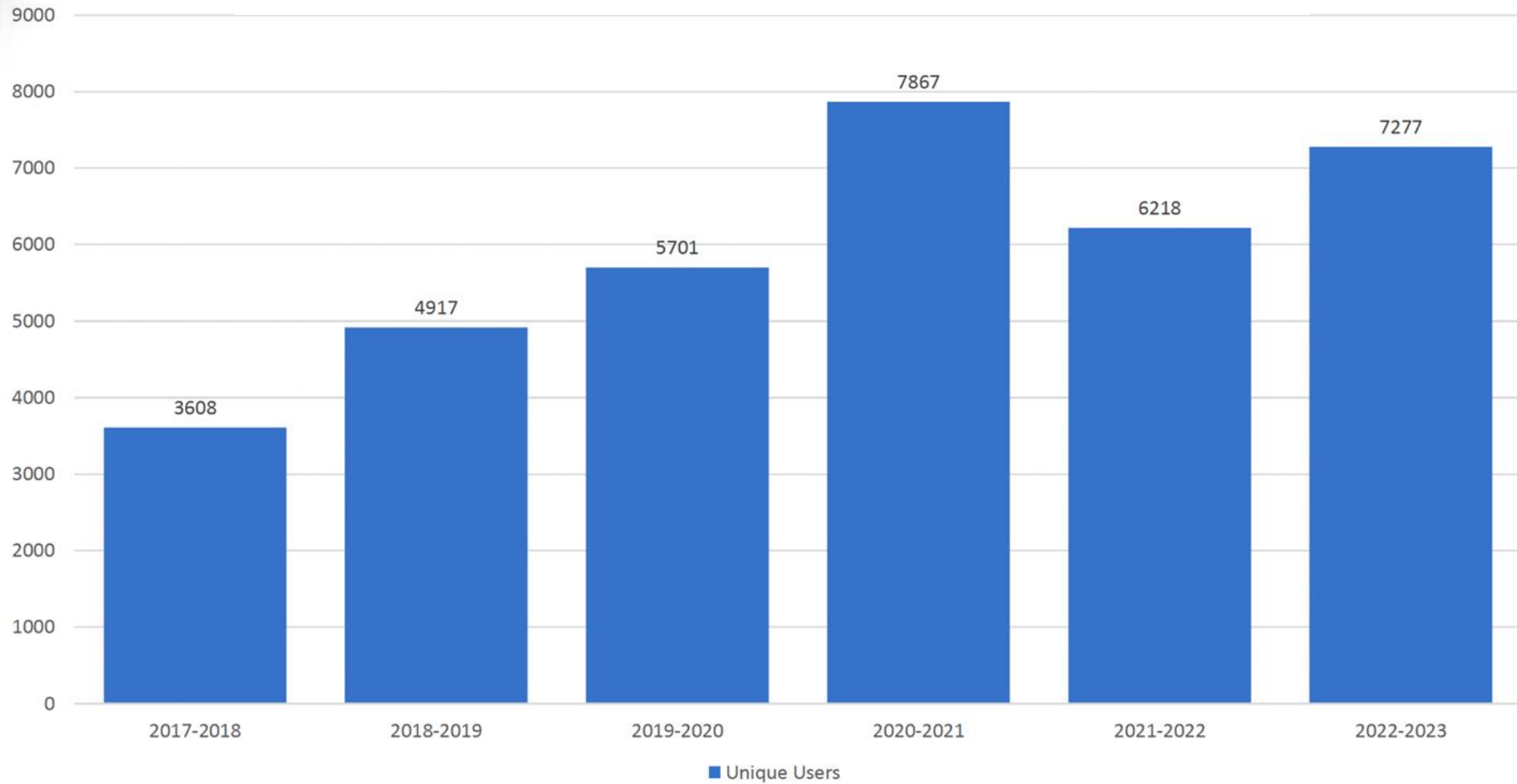


Checkouts Year Over Year

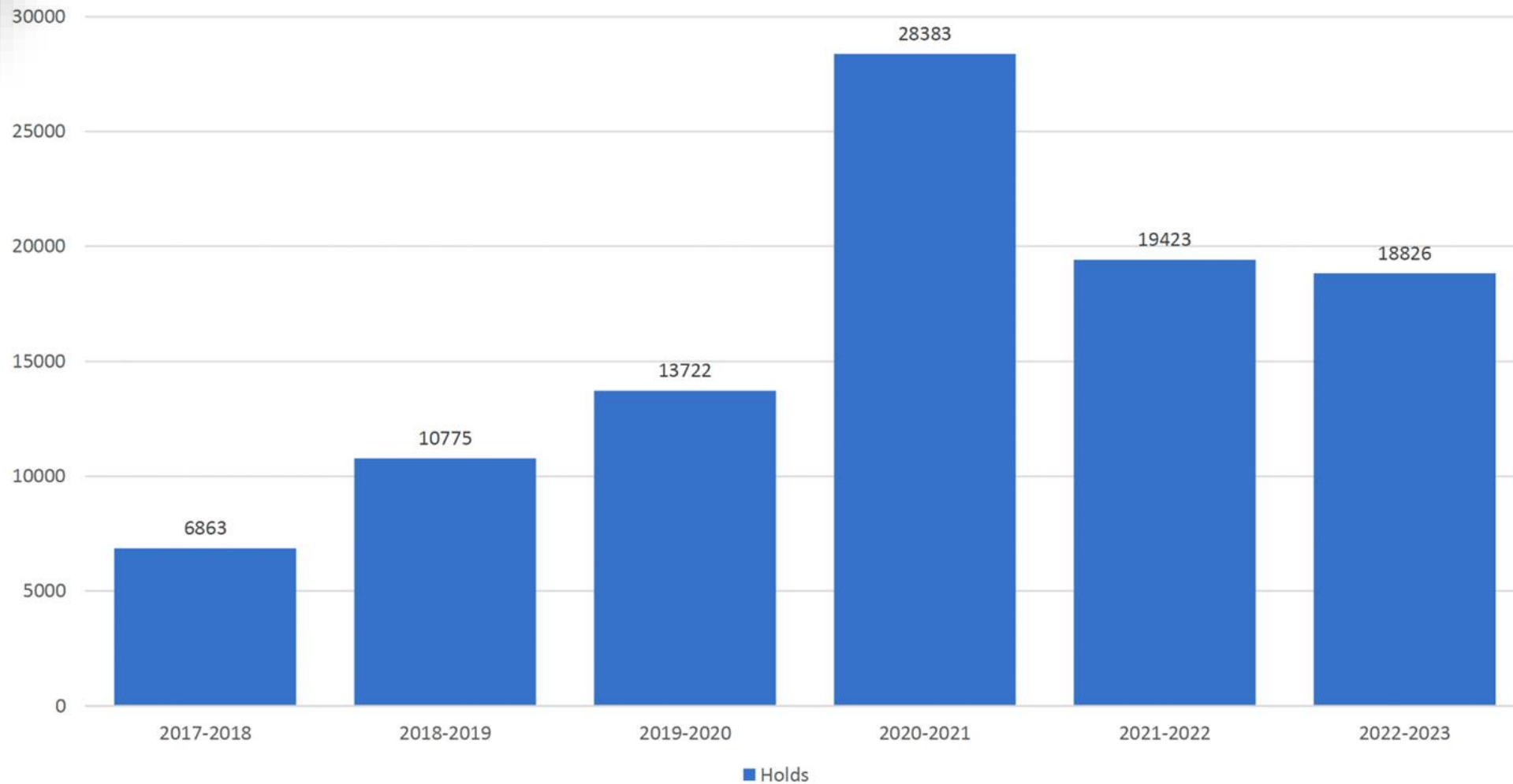




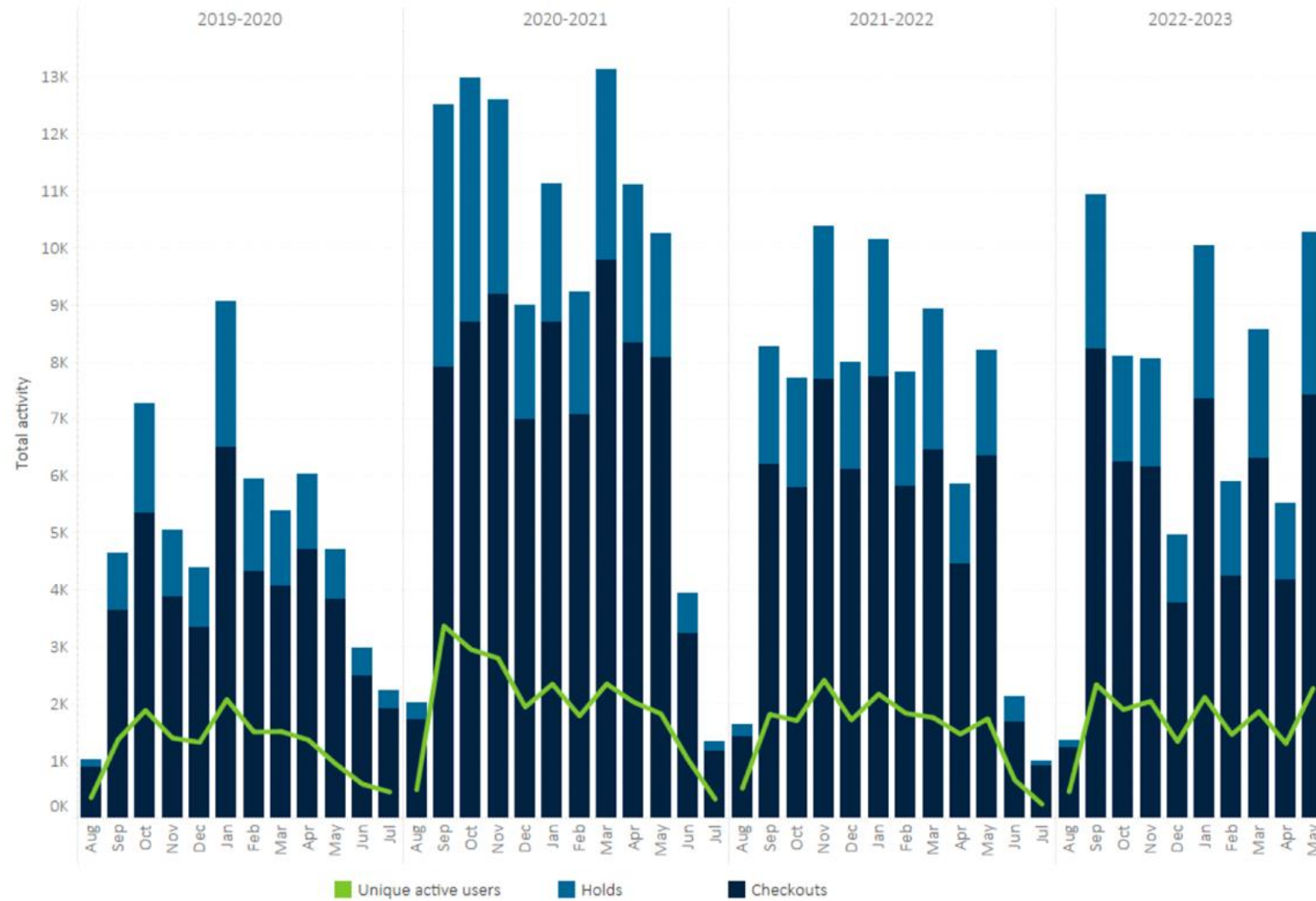
Unique Users Year Over Year



Holds Year Over Year



Total Activity & Unique Active Users



CONFIDENTIAL - PARTNER USE ONLY: CARBON LEHIGH INTERMEDIATE UNIT 21

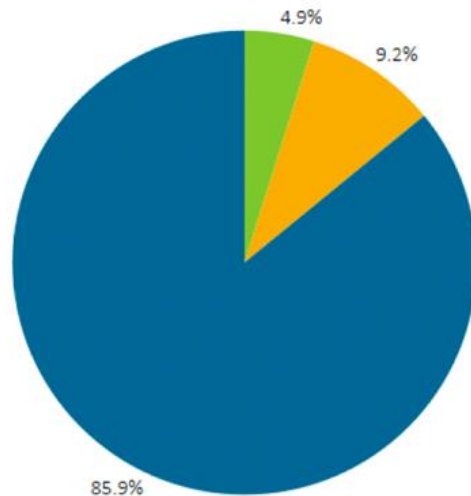
OverDrive

Business Systems and Analytics // June 12, 2023

Format

Data as of August 2019

Activity



Format ■ Read-along ■ Audiobook ■ eBook

Details

Format	Total activity	Holds	Copies purchased	Checkouts per copy	Checkouts	Spend (USD)	Cost per checkout
eBook	271,549	70,031	13,831	15	201,518	\$76,286	\$0.38
Read-along	13,964	2,576	362	31	11,288	\$3,030	\$0.27
Audiobook	32,471	7,643	590	42	24,828	\$19,387	\$0.78
Grand Total	323,253	80,353	15,068	16	242,900	\$102,703	\$0.42

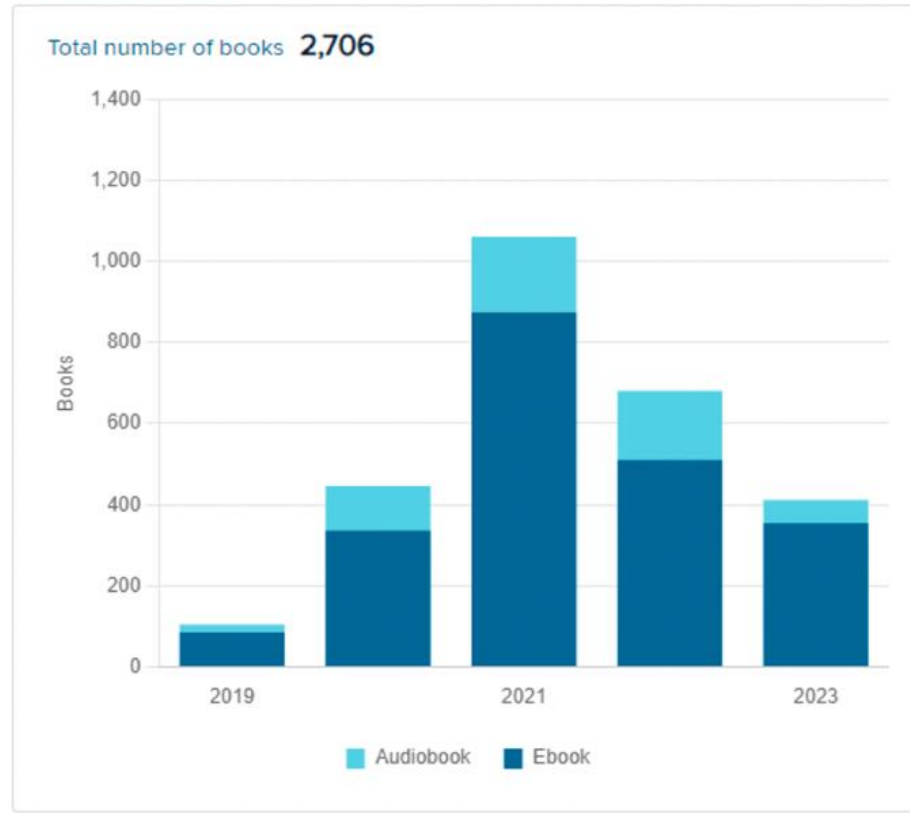
CONFIDENTIAL - PARTNER USE ONLY: CARBON LEHIGH INTERMEDIATE UNIT 21

OverDrive

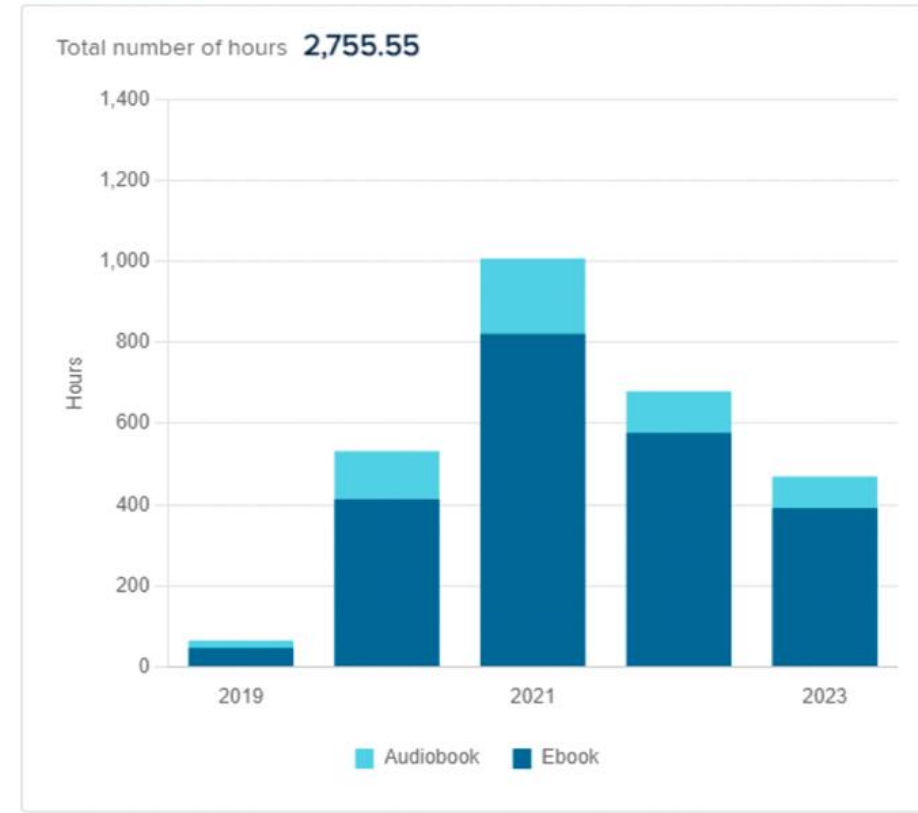
Business Systems and Analytics // June 12, 2019

Public Library Usage - Calendar Year

Total books opened



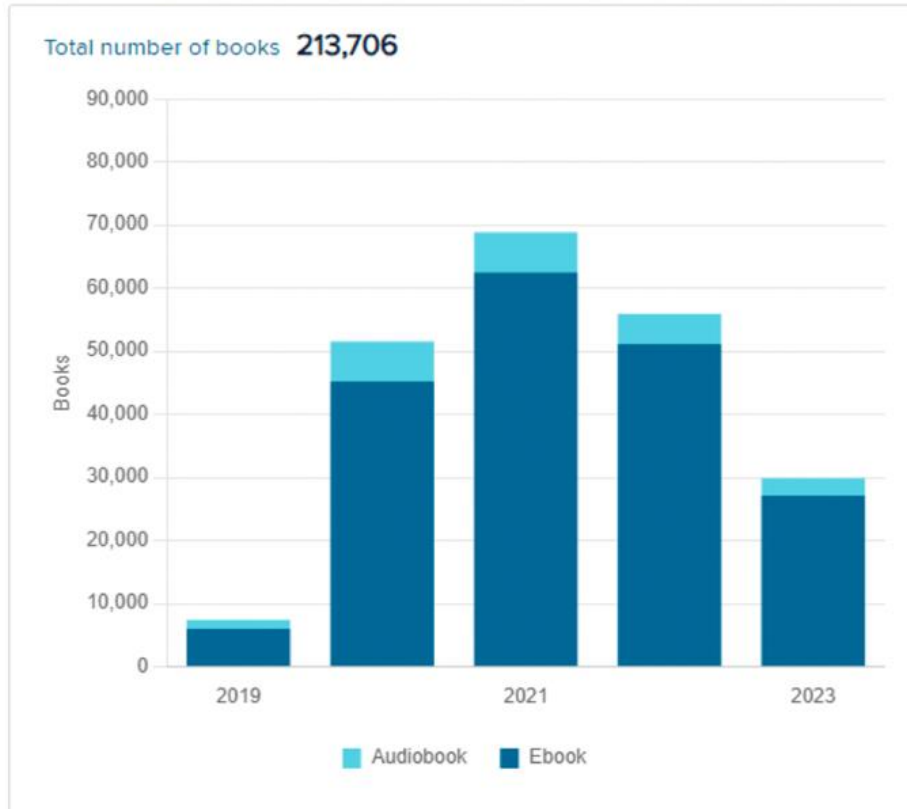
Total time read



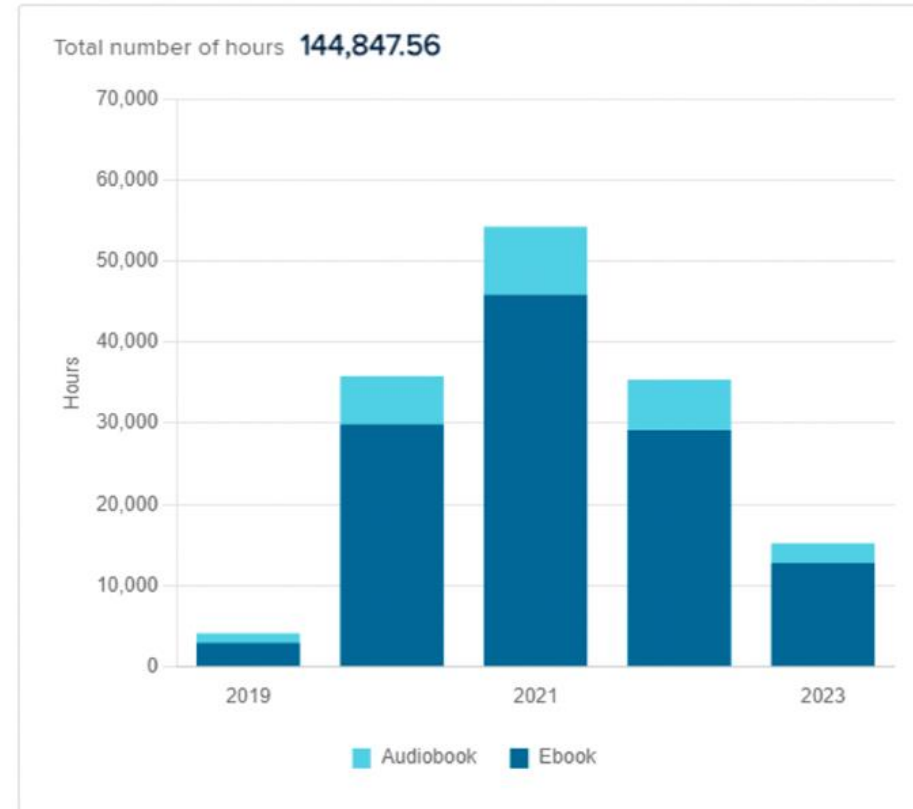


Sora Usage - Calendar Year

Total books opened



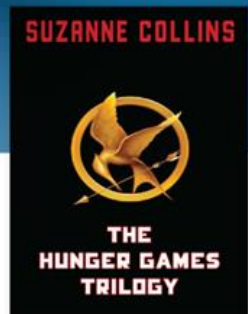
Total time read



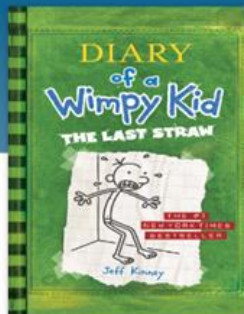
Digital Director Dashboard



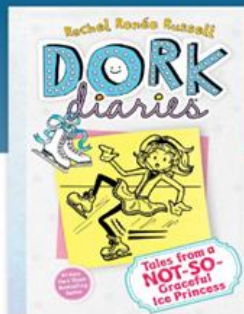
Digital Title Circulation



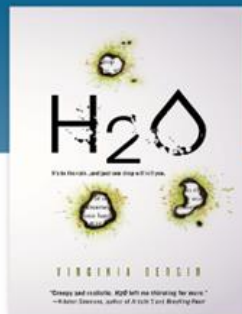
eBook hold
2 holds on 1 copy



eBook loan
5 holds on 2 copies



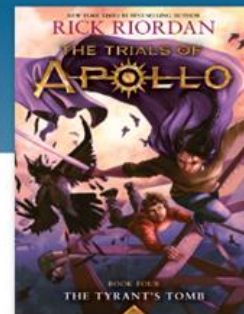
eBook loan
1 hold on 1 copy



eBook loan
0 of 1 copies available



eBook loan
0 of 1 copies available



eBook loan
0 of 1 copies available



eBook hold
not owned



eBook loan
0 of 1 copies available

Loans

CURRENT DAY

4

CURRENT MONTH

1,471

CURRENT YEAR

30,971

ALL-TIME

372,983

Holds

CURRENT DAY

1

CURRENT MONTH

308

CURRENT YEAR

11,101

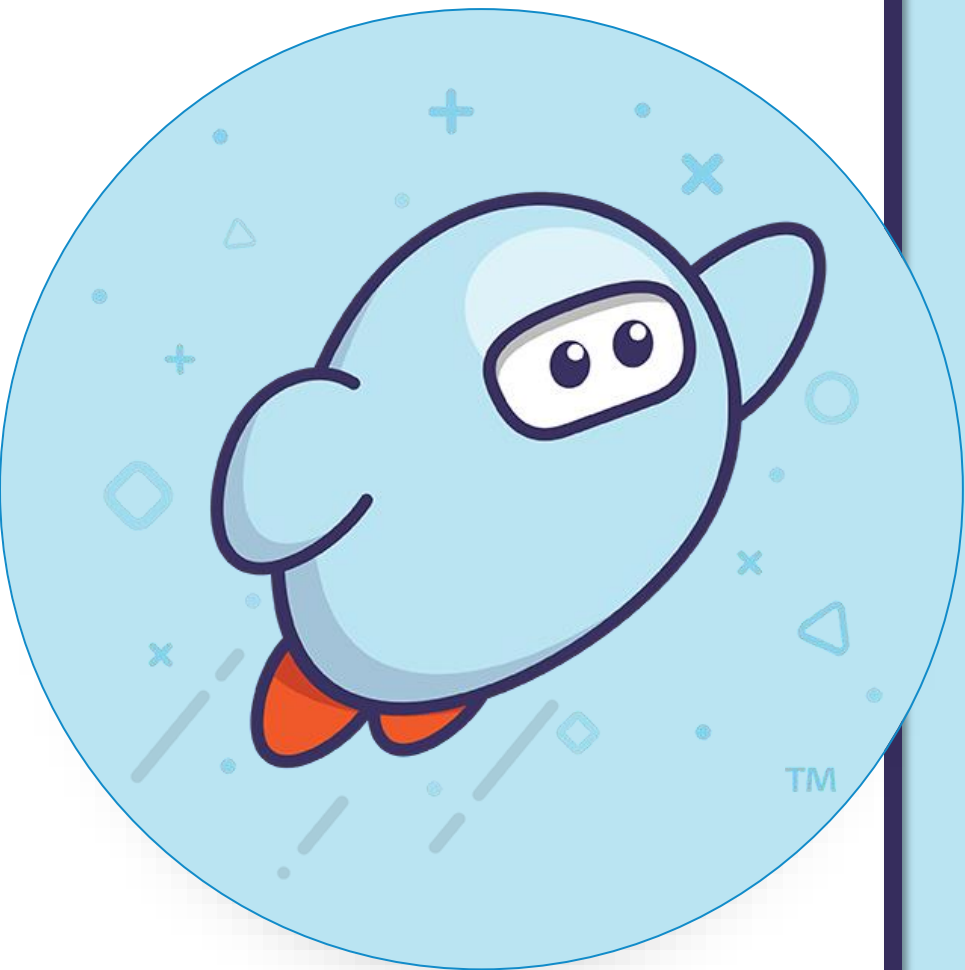
ALL-TIME

109,638





OverDrive
Education®



Thank you!



Diahann Ouly

Carbon Lehigh
Intermediate Unit 21
(Pennsylvania)

Curriculum &
Instruction/Educational
Technologies

oulyd@cliu.org
[@deeoylea](#)



Helping Children Learn

SESSION EVALUATION

Please take a moment to evaluate this session.

Your valuable feedback helps make the overall program stronger and ensures we're meeting your learning needs. Evaluations are also used by the conference program committee to provide feedback to presenters and inform future presentations.

To provide feedback and rate the quality of this session, please log-in and locate the session on the conference website at isteconference.org/2023/live.