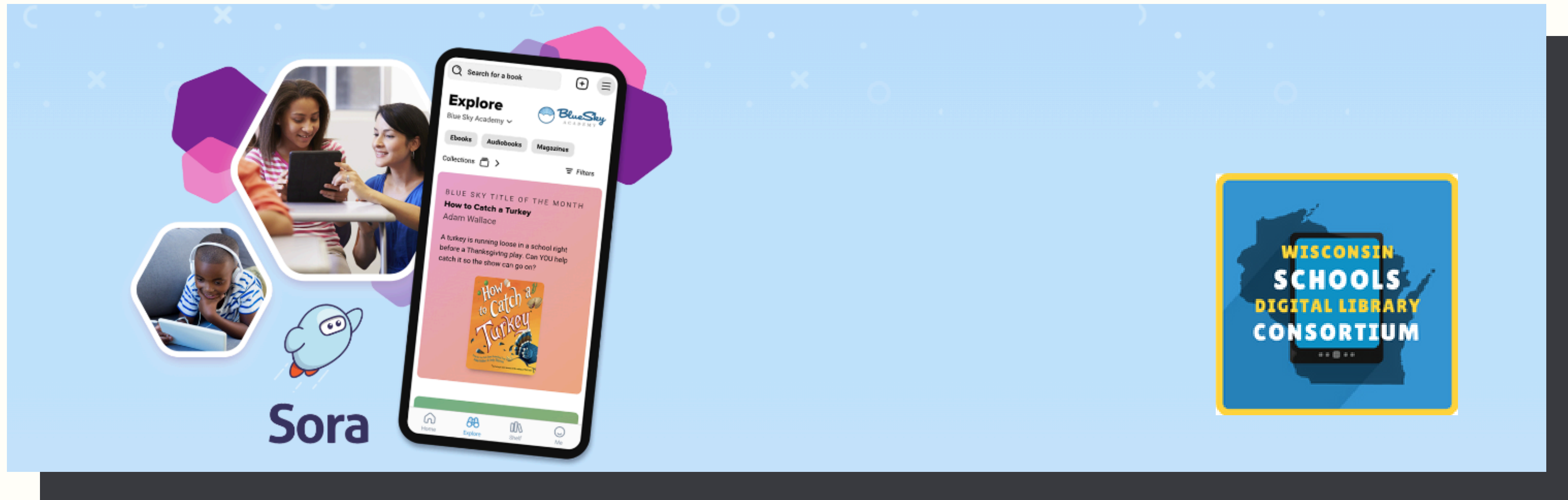


# Collaborate, Create, Curate: Building Statewide Digital Collections for \$1.65 a Student

Peg Billing and Sara Gold

ISTE 2024

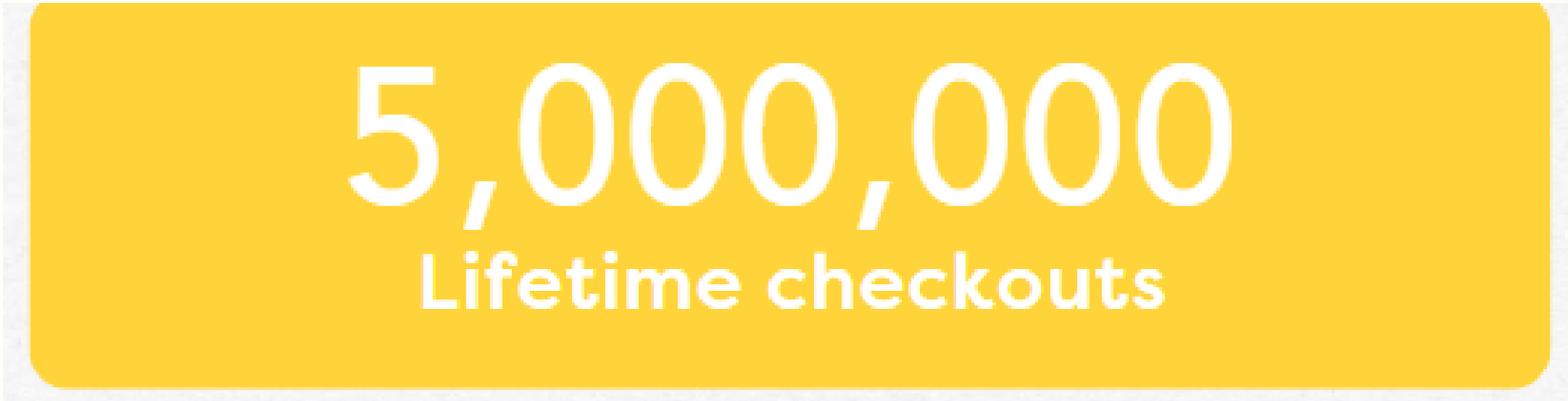




# Wisconsin Schools Digital Library Consortium

Providing Wisconsin K12 students access to Ebooks, Audiobooks, and Digital Magazines through Sora by OverDrive.





<https://wsdlc.org/>

**The WSDLC is the third-largest education digital library in the United States in circulation. The collection contains nearly 21,000 titles and 60,000 copies of ebooks, digital audiobooks, and magazines. Due to the consortium's collaboration, strong relationships with vendors, and innovative collection development strategies, that collection grew 121% in 2023 while only increasing cost by 21%.**

**In 2023, 54 school districts joined WSDLC and students checked out 1.4 million titles.**



# Where It Started

- How It's Going



**January 1st, 2018**



**86**  
Districts

Having served 11% of all Wisconsin students



**94,650**  
Students

**May 20th, 2024**



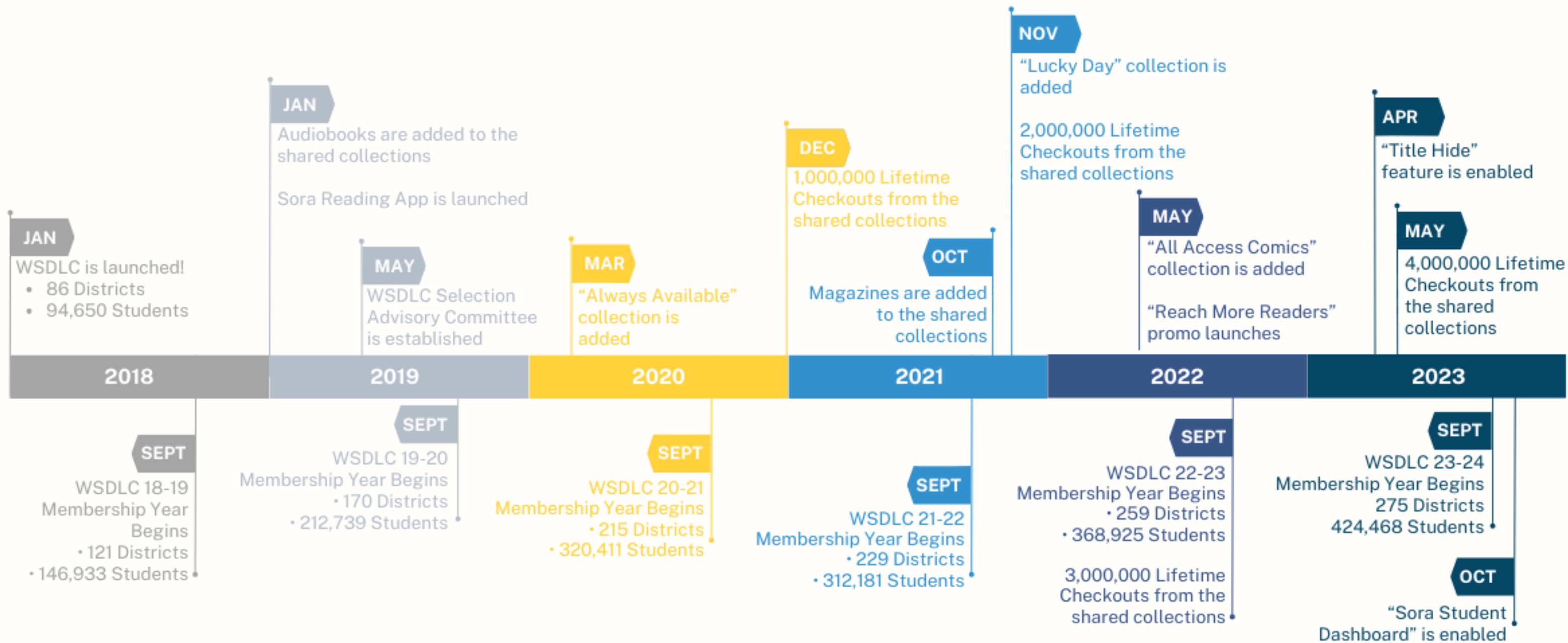
**298**  
Districts

Now serving 47% of all Wisconsin students



**445,408**  
Students





# Project Managers



**Sara Gold**

Team Lead



**Jennifer Chamberlain**



**Lisa Marten**

Financials and Budgets



**Rebecca Rosenstiel**

Admin Support

WiLS provides project management for the WSDLC including membership services, facilitating the WSDLC Board and Selection Advisory Committee, and serves as the fiscal agent for the consortium



# OverDrive Team



**Lena Richardson**  
OverDrive  
Account Manager



**Amanda Izuka-Lawman**  
OverDrive  
Product Support Specialist



**Beth Saxton**  
OverDrive  
Digital Content Librarian

OverDrive was selected through a RFP process to be the WSDLC's platform and content provider. Our OverDrive team plays a valuable role in the success of the WSDLC







# Governance




# The WSDLC Board

<b>CESA 1</b>	Jill Polglaze	Franklin Public Schools		Peg Billing*	Lakeland Union High School
<b>CESA 2</b>	Sarah Wendorf	Waunakee Community School District		Nell Flemming	Wisconsin School for the Deaf
<b>CESA 3</b>	Emily Zorea	Ithaca School District	<b>Appointed</b>	Beth Hennes	Madison West High School
<b>CESA 4</b>	Gidget Moore	Viroqua School District		Jennifer Peterson	Menasha Joint School District
<b>CESA 5</b>	Stephanie Judge	Sauk Prairie School District		Keith Schroeder	School District of Marinette
<b>CESA 6</b>	Michelle Rockelman	Campbellsport School District			*Board Chair
<b>CESA 7</b>	Holly Selle	Sturgeon Bay Schools			
<b>CESA 8</b>	Vince Czahor	Beecher-Dunbar-Pembine School District			
<b>CESA 9</b>	Laurie Agema	Mosinee School District			
<b>CESA 10</b>	Michele Green	School District of Greenwood			
<b>CESA 11</b>	Kate Lehne	St. Croix Falls School District			
<b>CESA 12</b>	Michelle Byholm	Chequamegon School District			
<b>Partner Representatives</b>	Vacant	CESA Statewide Network			
	Monica Treptow	Wisconsin Department of Public Instruction			

**WSDLC Board members represent each of the 12 Cooperative Educational Service Agencies (CESAs) in Wisconsin for elected 2 year terms. In addition there are appointed seats that serve 1, 2, or 3 year terms.**

<https://wsdlc.org/about/governance/>

# The WSDLC Selection Advisory Committee



Linda Hamann	Edgar School District
Gidget Moore	Viroqua School District
Naomi Peuse	Weyauwega-Fremont School District
Michelle Rockelman	Campbellsport School District
Joanne Sobolik	South Milwaukee School District
Teresa Voss	Verona Area School District
McKenzie Weaver	The Prairie School

The Selection Advisory Committee recommends the scope and direction of the collections included in the WSDLC. They advise the project manager and vendors on operational collection decisions, including content to be included and budget allocations, as directed by the Board and Collection Development Policy. 5 to 7 members are appointed by the Board to serve 2 year terms.

[Selection Advisory Committee Guidelines](#)



# Membership





**Schools or districts can enroll at any time and will have their memberships prorated to the start of the following membership year (September 1).**

**The WSDLC calculates FTE based on a district's previous year's certified enrollment numbers.**

**\*The cost per student during the 2024–25 academic year is \$1.65. Looking further ahead, the 2025–26 membership year will increase to \$1.72/student; and the 2026–27 membership year will increase to \$1.74/student. The WSDLC Board approves enrollment pricing in three year increments to help members budget.**

Two Agreements are used in the enrollment process:

**OverDrive Participation Agreement**

**WSDLC Letter of Participation**





# collections



# Content Access Levels

---

2018

K-4 Collection

5-8 Collection

9-12 Collection



2020

Juvenile/K-5 Collection

Young Adult/6-8 Collectic

Adult/9-12 Collection



Coming in  
2024

Lower Elementary (K-2) Collection

Upper Elementary (3-5) Collection

Middle School (6-8) Collection

High School (9-10) Collection

Senior High School (11-12) Collection



# Evolution of Content Access Levels

01

Wisconsin is a local-control state therefore districts need

02

More autonomy over which titles students have access to





# Two Major Requests:

01

Ability to remove/hide consortium-owned titles

02

More granularity in which titles schools/grades have access to

2018  
K-4 Collection  
5-8 Collection  
9-12 Collection



2020  
Juvenile/K-5 Collection  
Young Adult/6-8 Collection  
Adult/9-12 Collection



Coming in  
2024

Lower Elementary (K-2) Collection  
Upper Elementary (3-5) Collection  
Middle School (6-8) Collection  
High School (9-10) Collection  
Senior High School (11-12) Collection





# **WSDLC Collection Information**



## **WSDLC Collection Policy**

## **Statement on WSDLC Shared Collections**

## **Title List as of June 3rd, 2024 (Google Sheet)**

## **New Titles Added Each Month (Google Sheet)**

## **Recommend a Title for Purchase**

## **Intellectual Freedom Resources**

## **WSDLC Reconsideration Form**





## **WSDLC Circulation Policies**

**Checkout limit per user: 5 books**



**Lending period: 14 days is the default, with the option for users to update their preferences to 7 days, 14 days, or 21 days.**

**Hold limit per user: 5 books**





# Training





The WSDLC and OverDrive provide training in a variety of formats to help suit members' time, needs, and learning styles.

**Flipped Classrooms | Webinars | Tiny Case Studies  
One-on-One Sessions with OverDrive Staff | OverDrive  
Training Resources**





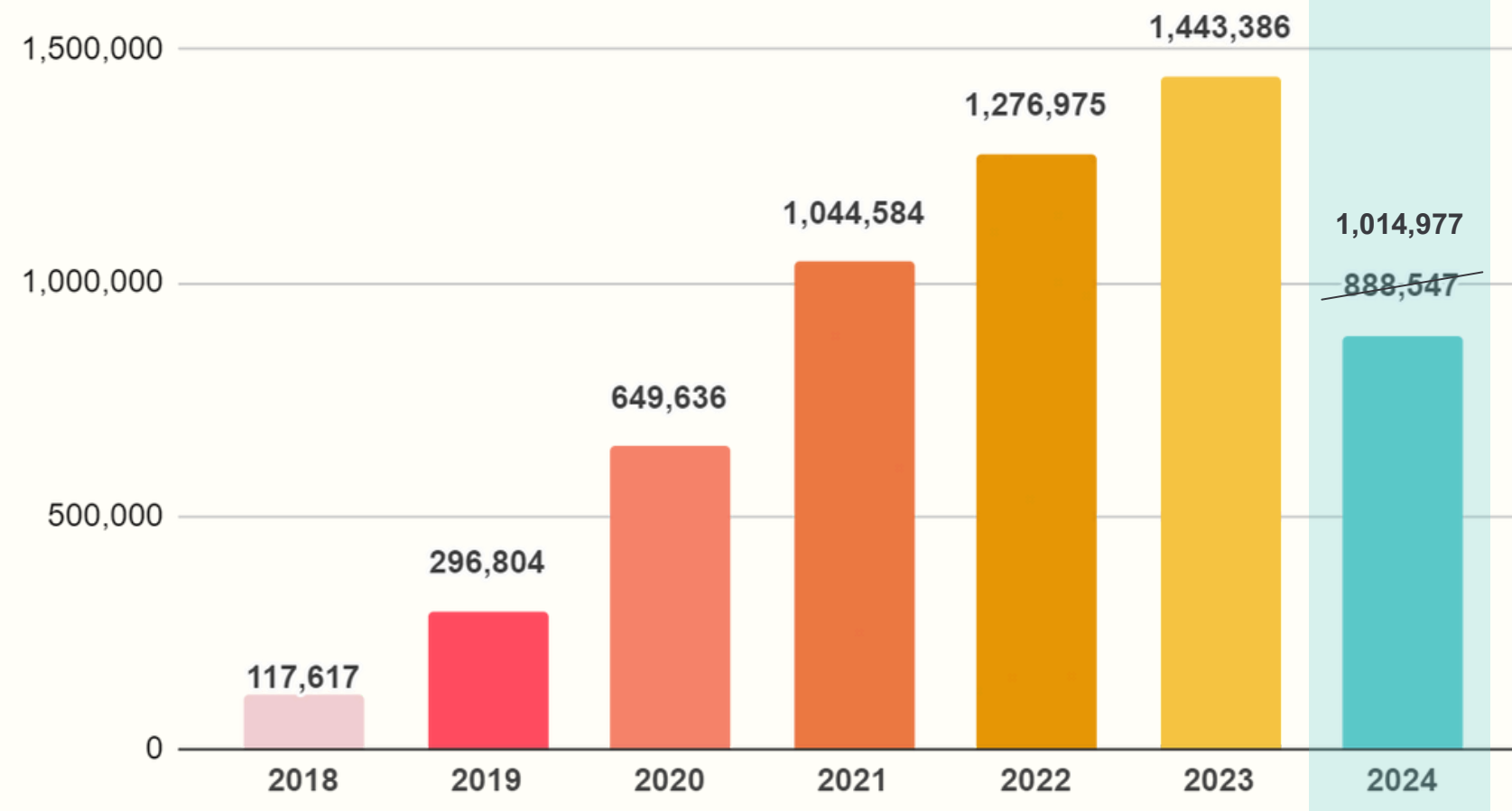
# Year-Over-Year Statistics



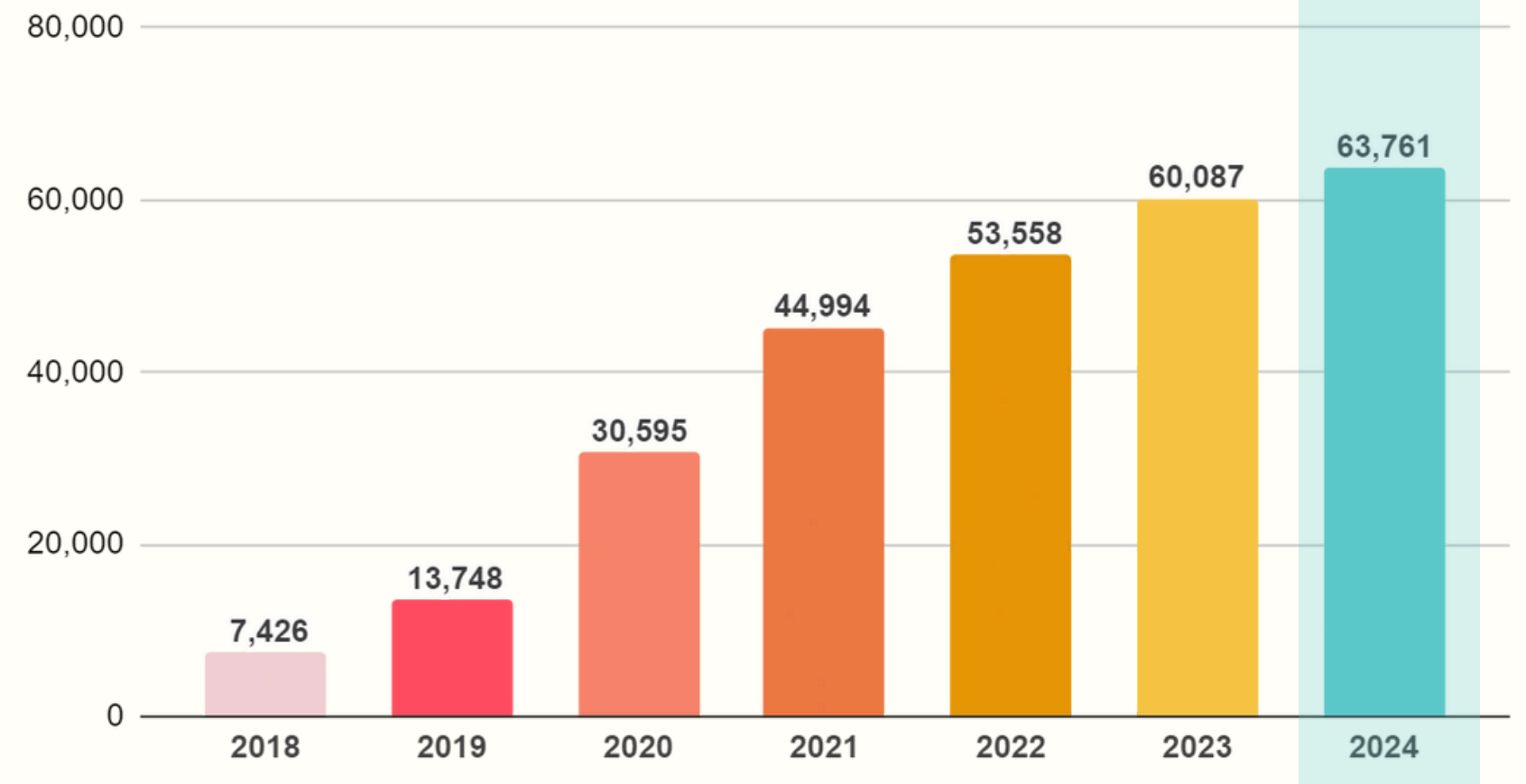
# Usage



## Checkouts



## Materials (Copies)



2023 had a

**13%**

increase in checkouts over 2022



# By the Numbers



**5,851,808**

**Lifetime  
Checkouts**

As of 5:00am this morning. (June 12)

**16  
Days**

**Holds  
Wait Time**

About the length of one checkout period.

**#3**

**Top Circulating  
K12 Collection**

Worldwide!







# Strategic Planning Goals





# Activites

- Revamp/create/coordinate more training opportunities, including both member-led and from OverDrive on new, prominent features. Topic areas include:
  - Good collection hygiene (early returns)
  - Advantage purchasing training and opportunities.
    - Determine a baseline of Advantage spending in Jan 2024 and then measure in December 2024 to determine any increases.
- Create a WSDLC Toolkit for new members
- Create/lead more marketing opportunities
- Building a standing, 2-year pool of WSDLC members from all CESAs to form a Reconsideration of Materials Committee as challenges come in; develop a process to put out an additional on-the-fly call for volunteers for the committee from the CESA where the challenge is originating. Together these should populate a Reconsideration of Materials committee in a timely manner and allow for a diverse set of minds.





# “Completed” Activities

Goal	Activity
<b>Raising awareness &amp; capacity for digitizing BIPOC authors' work</b>	Working with a graphic novel BIPOC publisher to connect them with OverDrive for inclusion in marketplace.
<b>Expanding national footprint &amp; national reputation/relationships</b>	<ul style="list-style-type: none"><li>• Participated in a panel discussion at Digipalooza ( OverDrive User Conference) on Book Challenges to a national audience August 2023.</li><li>• Computers in Libraries article</li><li>• Was approached by/are in chats with the Massachusetts Library System</li></ul>
<b>Member experience enhancements, ala MyWiLS and Sugar integration, Recollection WI, Overdrive in consortia, WiLS website</b>	Working with OverDrive Partner Advisory group on enhancements of Sora. Updated pricing quote sheets to streamline the renewal process/make it easier for LMS staff to approve renewals and request access updates.
<b>Finding new ways to stay connected across different projects and different areas of WiLS? Take advantage of our networks, eg: TLAM and iSchool relationship.</b>	<ul style="list-style-type: none"><li>• Connected with DPI/BadgerLink on Toolkit resources and marketing materials.</li><li>• Led a Collections Management presentation at the iSchool (LIS 655)</li></ul>





**THANK YOU for your interest**

**Interested in Creating a Digital Resources Consortium in Your Region?**

**Email us at [wslc-info@wils.org](mailto:wslc-info@wils.org)**

**We are happy to share information and collaborate!**

